

**DAWN
INSTRUMENTS**



**PRESSURE
& TEMPERATURE
MEASURING
INSTRUMENTS**



**DAWN INSTRUMENTS ENGINEERING
INDIA**

ICHAPUR CANEL SIDE, PURBAPARA, BESIDE MAHASHAKTI SWEETS
MA BHABATARINI SARANI, HOWRAH - 711 104 (W.B.)
PHONE : (033) 2677 2378, FAX : (033) 2667 1755, MOBILE : 09830499397, 09432212353
Website: www.dawninstruments.com

CORRESPONDENCE ADDRESS : 37, HEM CHAKRABORTY LANE, NEAR DESHPRAN SANGHA, HOWRAH - 711 101

7

ELECTRIC ALARM & CONTROL CONTACT**DAWN****Specification:****DISC CAMBRIDGE TYPE**

Contact Rating : 230 Volts A.C. 0.15 AMPS
 Contact : 1 No., 1 Nc, 1 Nc + 1 No, 2 No.

MAGNETIC SNAP ACTION TYPE

Contact Rating : 230 Volts AC 1 AMPS
 Contact : 1No, 1Nc, 1Nc + 1No, 1No + 1 Nc, 2No, 2 Nc

up to 5 AMPS Relay is used

Contact type Pressure Gauge and Temperature Gauge Suitable for use in transformer and Thermal Power Station also available.

8

TEMPERATURE & PRESSURE RECORDER**DAWN****Specification:**

Range : 0-50°C to 0-300°C
 Diameter of Chart : 250 MM
 Chart Drive : Electrical Chart drive of 230 volts AC, 50 Cycles
 Number of Pen : One or Two

Specification:

Range : 0-1Kg/CM² to 0-160 Kg/CM²
 Diameter of Chart : 250 MM
 Chart Drive : Electrical Chart Drive of 230 Volts AC, 50 Cycles
 Number of Pen : One or Two

ICHAPUR CANEL SIDE, PURBAPARA, BESIDE MAHASHAKTI SWEETS
 MA BHABATARINI SARANI, HOWRAH - 711 104 (W.B.)
 PHONE : (033) 2677 2378, FAX : (033) 2667 1755, MOBILE : 09830499397, 09432212353

CORRESPONDENCE ADDRESS : 37, HEM CHAKRABORTY LANE, NEAR DESHPRAN SANGHA, HOWRAH - 711 101

1

Bourdon Type PRESSURE, VACUUM & COMPOUND GAUGE **DAWN**



Commercial Gauges



All S.S.



Weather Proof



Flush Mounting

Specification:

Dial Size	: 100, 150, 200, 250 and 300 MM
Range	: 0-1 Kg/CM ² to 0-1000 Kg/CM ² , -760 MMHg to 0 MMHg, -760 MMHg to + 28 Kg/CM ²
Case	: Die Cast Aluminium Stoved enameled black or Stainless Steel 304 Weather Proof
Movement	: Brass or Stainless Steel 304
Borden	: Brass or Stainless Steel 304/316
Connection Material	: Brass or Stainless Steel 304/316
Connection	: 1/4", 3/8", 1/2", BSP or NPT
Mounting	: Surface, direct or flush Panel
Accuracy	: ±1% of FSD

2

Schaffers Diaphragm & Capsule Type MMwc Gauge **DAWN**



Diaphragm Type Capsule Gauge



Schaffers Diaphragm Gauge



Compact Type Capsule

Specification:

Dial Size	: 100, 150, 200 and 250 mm
Range	: 0-1 Kg/CM ² to 0-28 Kg/CM ² , -760 mmHg to 0
Case	: Cast Aluminium or Stainless Steel 304
Movement	: Brass or Stainless Steel 304
Chamber	: Top Chamber : Aluminium or S.S. 304 Bottom Chamber : S.S. 304
Diaphragm	: Stainless Steel 316
Protection	: Teflon/Silver Coating
Connection Material	: Stainless Steel 304
Connection	: 1/4", 3/8", 1/2", BSP or NPT
Mounting	: Direct Bottom
Accuracy	: ±1.5% of FSD

Specification:

Dial Size	: 63, 100 and 150 mm
Range	: Min. 0-100 MMWC to Max. 10,000 MMWC (for 63 MM Min. 0-600 MMWC)
Case	: Die Cast Aluminium or Stainless Steel
Movement	: Brass
Capsule	: Brass or Stainless Steel
Diaphragm	: Stainless Steel 316
Connection Material	: Brass or Stainless Steel
Connection	: 1/4", 3/8", 1/2", BSP or NPT
Mounting	: Direct Bottom or Back
Accuracy	: ±1.5% of FSD

3

Sealed DIAPHRAGM PRESSURE GAUGE **DAWN**



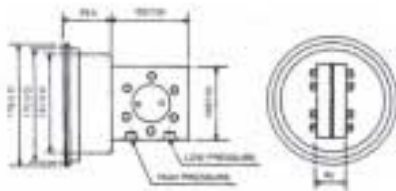
Specification:

Dial Size	: 100, 150, 200 and 250 MM
Range	: 0-1 Kg/CM ² to 0-400 Kg/CM ² , -1 Kg to + 10 Kg/CM ²
Case	: Die Cast Aluminium Stoved enameled black or stainless Steel 304 Weather Proof.
Movement	: Non-Ferrous Brass or Stainless Steel 304
Chamber	: Top Chamber - Mild Steel or Stainless Steel 304/316 Bottom Chamber - Stainless Steel 304/316
Diaphragm	: Stainless Steel 304 / 306
Protection	: Teflon
Connection Material	: Mild Steel or Stainless Steel 304/316
Connection	: 1/4", 3/8", 3/4", 1/2", BSP or NPT or MM.
Mounting	: Surface, direct or Flush panel back entry (Distance type also available on request)
Accuracy	: ±1% of FSD

4

DIFFERENTIAL PRESSURE GAUGE

DAWN



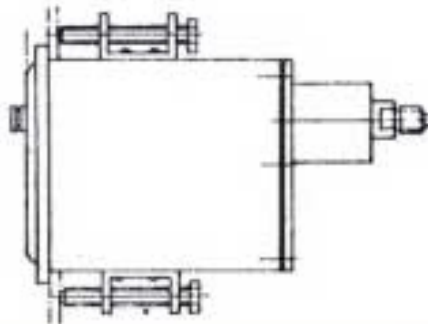
Specification:

Dial Size	: 100, 150 MM
Range	: 0-250 MMWC to 6000 MMWC, 0-0.9 bar or Kg/Cm ² to 21 bar or Kg/Cm ²
Case	: Die Cast Aluminium Stoved enameled black or Stainless Steel 304 Weather Proof
Max. Static Pressure	: 100 Kg/Cm ²
Sensing Element	: Stainless Steel 316 Diaphragm up to 0.5 Kg/Cm ² . Above 0.5 Kg/Cm ² Diaphragm is of Hardened Alloy Steel
Chamber	: Stainless Steel 304 / 316
Connector	: 1/4" NPT (F), other Connection are available with adaptor
Mounting	: Direct bottom, Flush Panel bottom or back
Accuracy	: ±1% of FSD
Standard Fitment	: I Over range relief Valve II External Zero Adjustment III Three way Manifold of Stainless Steel 304 / 316

5

EDGEWISE DRAUGHT GAUGE

DAWN



Specification:

Dial Size	: 150 MM X 78 MM, 200 MM X 104 MM
Range	: 0-40 MMWC to 6000 MMWC, -300 MM to +300 MMWC
Panel Cutout	: 138 MM X 68 MM, 186 MM X 92 MM
Case	: Fabricated Steel Stove enameled black
Window	: Perspex
Sensing Element	: Stainless Steel 316 Capsule
Connection	: 1/4", BSP or NPT
Mounting	: Flush Panel Back
Accuracy	: ±1% of FSD

6

Vapour Pressure & Mercury-in-Steel DIAL THERMOMETER

DAWN



Specification:

Type	: Rigid Stem and Distance type
Dial Size	: 100, 150, 200, 250 and 300 MM
Range	: Min-38 +50°C to Max. up to 650°C or its equivalent in °F
Case	: Die Cast Aluminium Stoved enameled
Movement	: Non-Ferrous Brass or Stainless Steel 304
Bulb and Stem	: For V.P.T : Non-Ferrous Brass (up to 300°C), Mild Steel or Stainless Steel 304/316 (for above 300°C) For M.S.T : Mild Steel or Stainless Steel 304/316
Capillary	: For V.P.T : Copper, For M.S.T : Mild Steel
Capillary Armour	: Copper Alloy tube, Stainless Steel tube, Stainless Steel Flexible, Steel spring Covered with PVC
Connection	: 1/4", 3/8", 3/4", 1/2", BSP or NPT or MM.
Mounting	: Direct, Flush Panel or back Surface bracket.
Accuracy	: ±1% of FSD